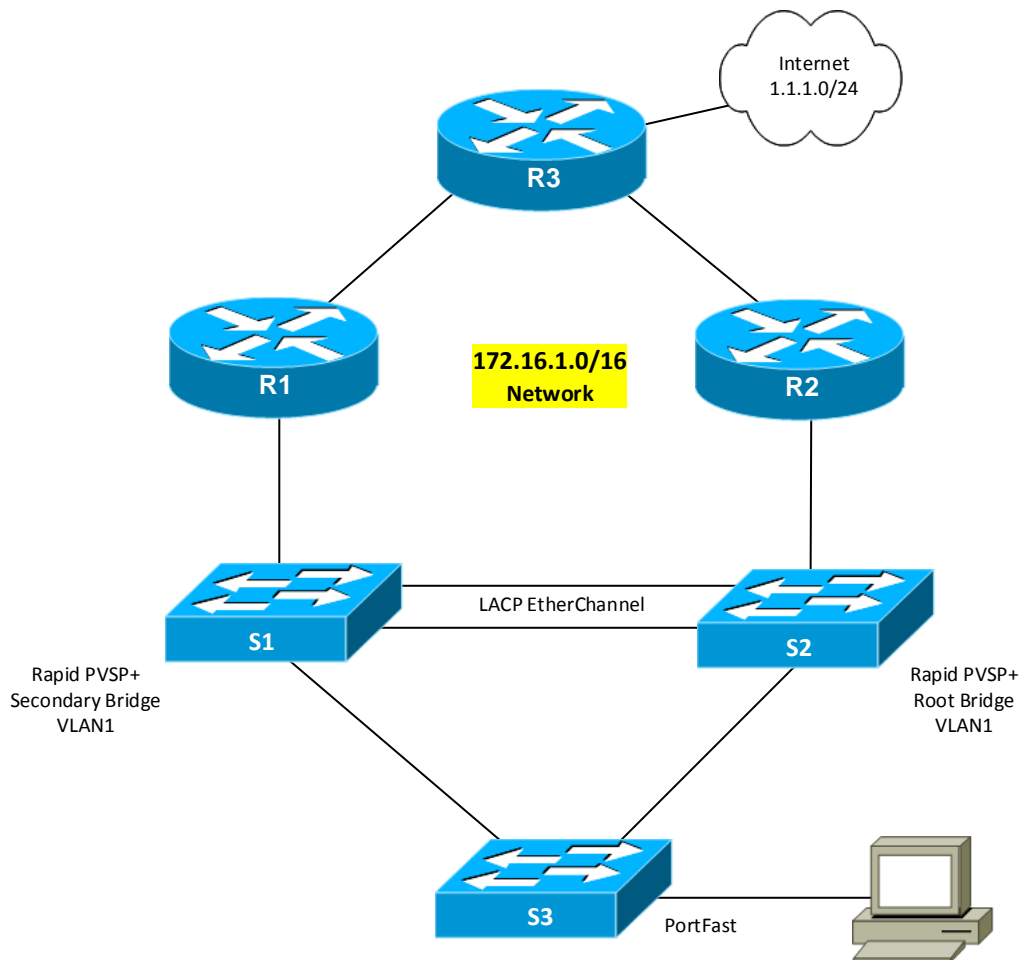


INFO-3119: Practical Test 1 Prep Lab

Oct 2016



Notes:

- Configure appropriate network addressing
- Use appropriate base configurations for each device
- Choose appropriate device interfaces to use - use Ethernet ports/cables for all connections
- Use OSPF as the routing protocol
- Configure R1 and R2 for first hop redundancy using GLBP. Set R2 as the AVG.
- Configure S2 as the Rapid PVST+ root bridge and S1 as the secondary
- Configure a two cable LACP EtherChannel between S1 and S2
- Configure PortFast on the interface that S3 uses for the connection to the workstation/laptop

Please Note: **NO** assistance will be provided for this Practical Prep Lab